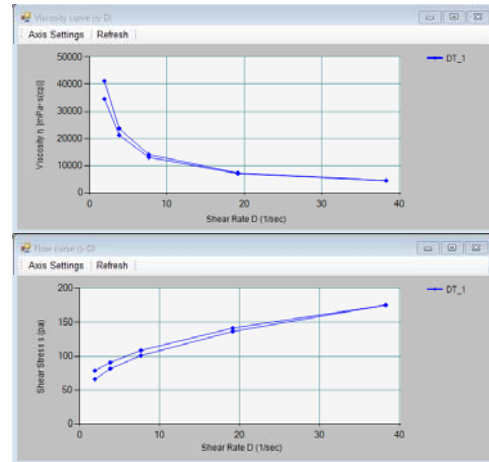
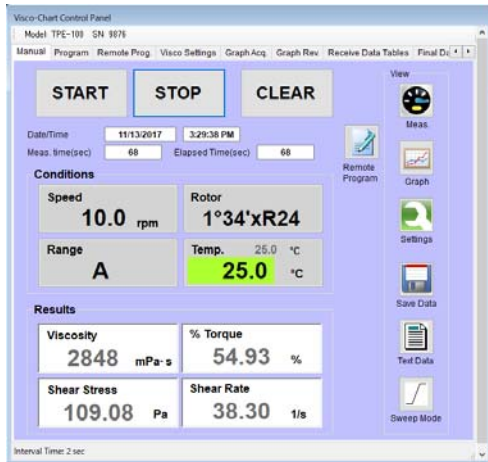


Collect data and Plot graphs software

Visco-chart Ver.7.0

Visco-Chart is a proprietary software developed by Toki Sangyo Co. Ltd for use with Toki Sangyo viscometers. Visco-Chart is a data retrieval and graph generating software. Visco-Chart fetches data output from the viscometer, creates graphs, saves data, and reproduces saved files as well as performs simple analysis. This software can also be provided with a security function and database function.

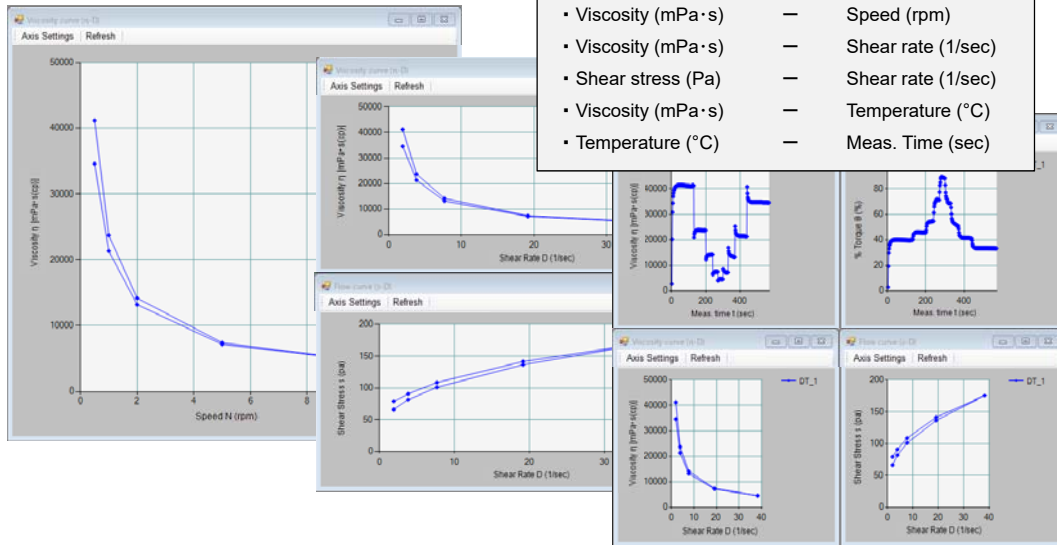


■ Features

- ◆ Simple operation
- ◆ Real time graph creation (Up to 7 types of graphs can be generated)
 - Viscosity (mPa·s) — Meas. Time (sec)
 - %Torque (%) — Meas. Time (sec)
 - Viscosity (mPa·s) — Speed (rpm)
 - Viscosity (mPa·s) — Shear rate (1/sec) ※¹
 - Shear stress (Pa) — Shear rate (1/sec) ※¹
 - Viscosity (mPa·s) — Temperature (°C) (for TD-100S)
 - Temperature (°C) — Meas. Time (sec) (for TD-100S)
- ◆ Remote program function that can be controlled by PC ※²
- ◆ Data can be saved in csv and text formats (Read-only)
- ◆ Analysis and printout of saved data
- ◆ Automatic retrieval stop function based on viscosity value or time
- ◆ TI value calculation function (in program mode) ※²
- ◆ Simple report (Final data) output function
- ◆ Security function ※⁴
 - User registration function allows log-in only by registered users
 - Individual access authority setting for each registered user
- ◆ Database function ※⁴
 - Database of collected data can be compiled and saved

■ Graph display

Seven types of graphs are displayed freely

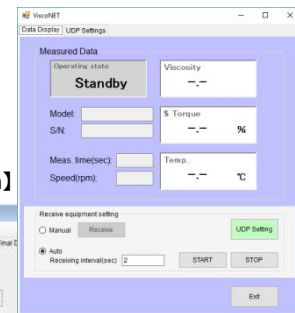


- Viscosity (mPa·s) — Meas. Time (sec)
- % Torque (%) — Meas. Time (sec)
- Viscosity (mPa·s) — Speed (rpm)
- Viscosity (mPa·s) — Shear rate (1/sec)
- Shear stress (Pa) — Shear rate (1/sec)
- Viscosity (mPa·s) — Temperature (°C)
- Temperature (°C) — Meas. Time (sec)

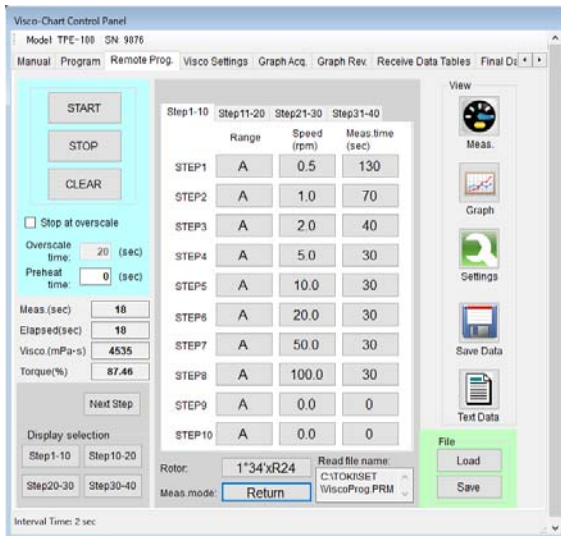
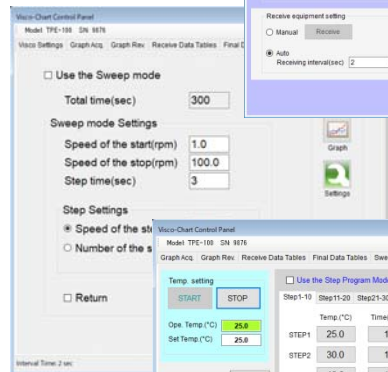
■ Various measurement functions

- ◆ Remote program function ※²
- ◆ Temperature step program function (For TPE-100)
- ◆ Rotational speed automatic sweep function
- ◆ Drift free function (For TPE-100)
- ◆ Network communication function

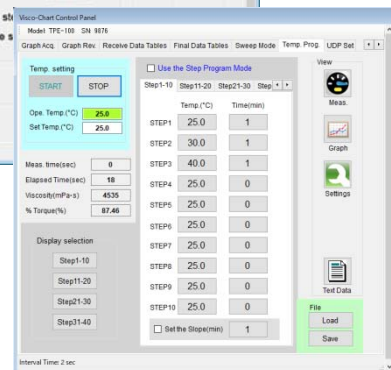
【Network communication screen】



【Sweep mode setting screen】



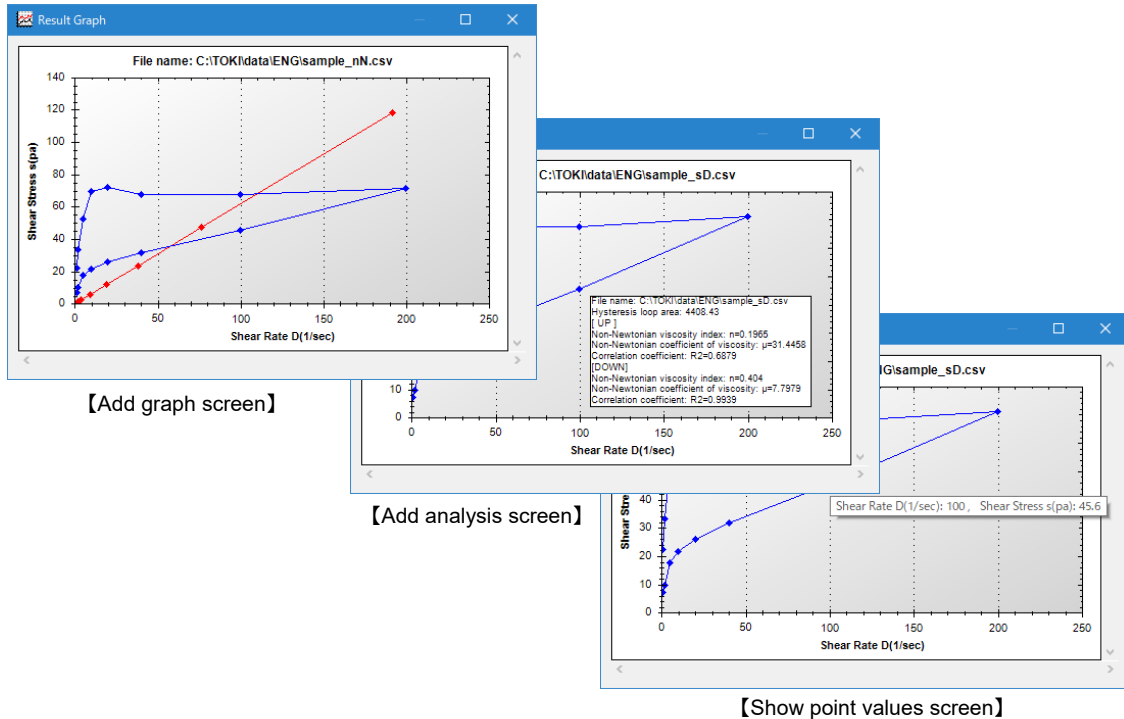
【Remote program screen】



【Temperature step program screen】

■ Generated graph function

- ◆ Superimposition of multiple graphs
- ◆ Analysis function (hysteresis loop area, power law) ※3
- ◆ Image save, print function
- ◆ Zoom function



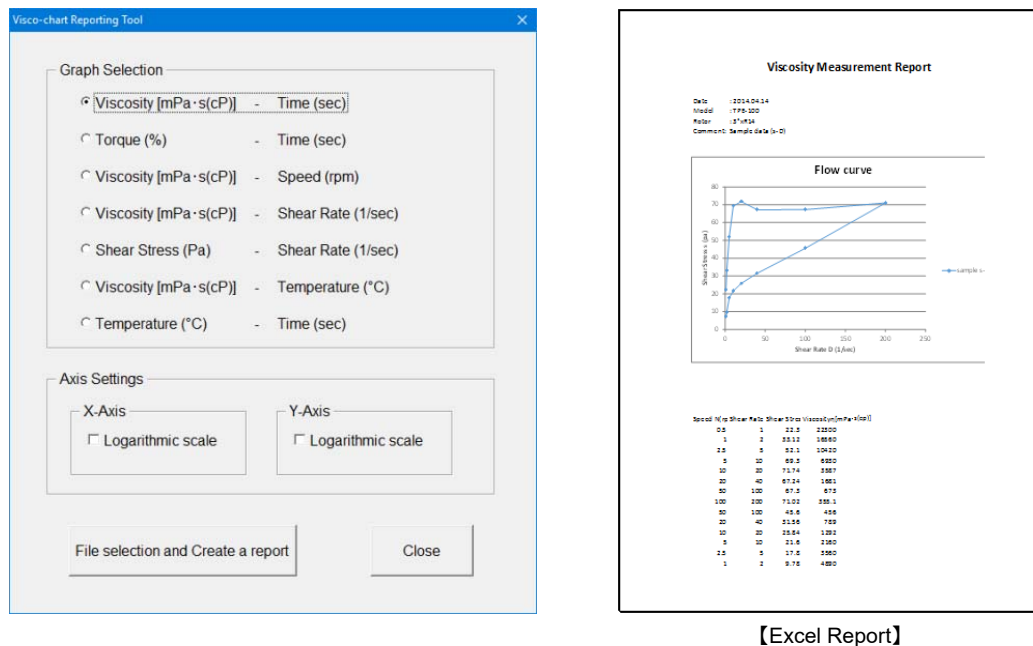
【Add graph screen】

【Add analysis screen】

【Show point values screen】

■ Report creation function

Create an Excel report from the saved csv file ※ Installation of EXCEL is necessary



■ Security function

- ◆ It has a user registration function, and only registered users can login ※4
- ◆ The access authority of the operation function can be set for each registered user ※4

User Name	Dept.	User ID	Password	Administrator authorization
admin		admin	admin	<input checked="" type="checkbox"/>
TOKI Taro	Production	TOKI	TOKI	<input type="checkbox"/>

■ Database function

Save the collected data as a database ※4

【Save Data Table】

【File detailed information】

- ※1: For cone plate
- ※2: TPE-100/TV35 only
- ※3: Viscosity curve/Flow curve graphs only
Viscosity curve : Viscosity (mPa·s) — Speed (rpm), Viscosity (mPa·s) — Shear rate (1/sec)
Flow curve : Shear stress (Pa) — Shear rate (1/sec)
- ※4: SQL Server Express used
- ※ This program can be used only on Windows 7 or later.
Operating guarantee and support will not be applied for earlier operating systems.

Manufacturer

TOKI SANGYO

Headquarters:

Fuji Building 5-32-6, Shinbashi, Minato-ku, Tokyo 105-0004, JAPAN

Tel: +81-3-3434-5501 Fax: +81-3-3433-4044

E-mail: Tokyo@tokisangyo.co.jp

<http://www.tokisangyo.com/>